

EPSON RC+
Robot Control System

Installing Options

Table Of Contents

Overview	3
Software Options Key	3
Enabling the Software Options Key for the New Option	4
Installing the Software for the New Option.....	5
Manuals	6
Vision Guide Option.....	7
Code Reading Option	7
VB Guide Option.....	8
Ethernet I/O Option	8
PG Motion System Option	9
Security Option.....	9
Conveyor Tracking Option.....	10
OP500RC Operator Pendant Option.....	10
Force Sensing Option	11
Expansion ISA Digital I/O Option	11
SPEL Runtime Drivers Option.....	12
Standalone Option	12

Overview

Thank you for purchasing your EPSON RC+ Robot Control System Option. This document contains important information for installing your option.

If you purchased your option with the system you ordered, then the option will already be installed when you receive your system and you do not need to use this document.

If you are adding an option after receiving your system, then you must follow the instructions in this document.

Please refer to the section for the option you are installing. Each section describes the hardware, software, and manual used for the option, and also indicates if other options are required.

Software Options Key

Included with the EPSON RC+ Software is a software key device that enables options. Without this device, the options you have installed will not be enabled. All options are enabled on one key.

The software options key is installed by simply plugging the male end of the key into the parallel port connector on the PC Control Unit.



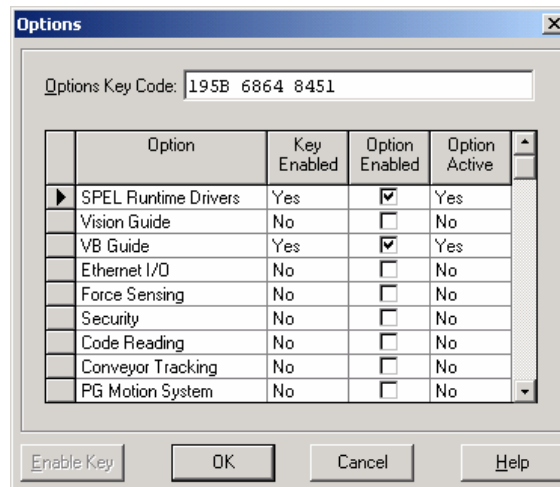
CAUTION

- **Do NOT plug the options key into the Option Device receptacle on the front panel of the controller. Permanent damage to the key will occur.** Connect the options key only to the DB25 parallel port located on the back of the controller.

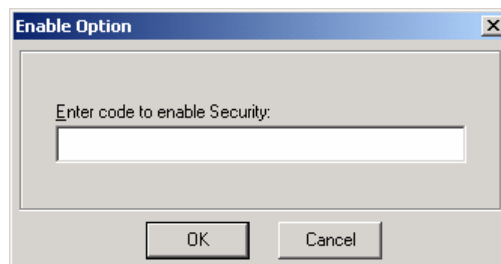
Enabling the Software Options Key for the New Option

Before you can use your new EPSON RC+ Option, you must enable the Software Options Key for the new option.

1. Start EPSON RC+.
2. From the Setup menu, select Options to display the Options dialog. If you have already received the enable code from your distributor, go to step 6.



3. Write down the **Options Key Code** from the Options dialog.
4. Call your distributor to purchase the option.
5. You will receive a code to enable the option from your distributor.
6. Select the option to enable on the grid, and then click the Enable button.
7. Enter in the code you received from your distributor and click OK.



Enabling an option

8. A message box will be displayed indicating that the option was successfully enabled. If an error occurs, ensure that the Software Options key is the correct one that you gave your distributor the code for. Try to enable again and ensure that the correct code is entered. If you still get errors, contact your distributor.
9. Restart EPSON RC+.

Installing the Software for the New Option

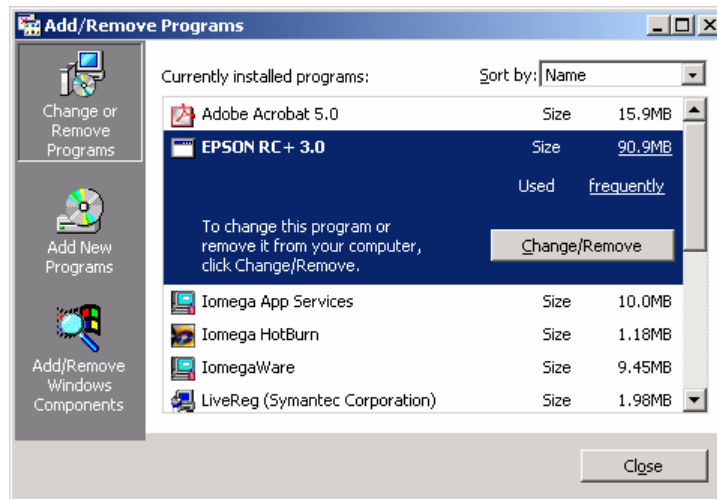
Most of the options for EPSON RC+ require that you install additional software. First, please refer to the section in this document for the option you are installing. If instructed to install software for the option, please follow the instructions in this section.

Ensure that you have the correct version of EPSON RC+ for the option you are installing. Refer to the section for the option in this document and check the EPSON RC+ Software Version.

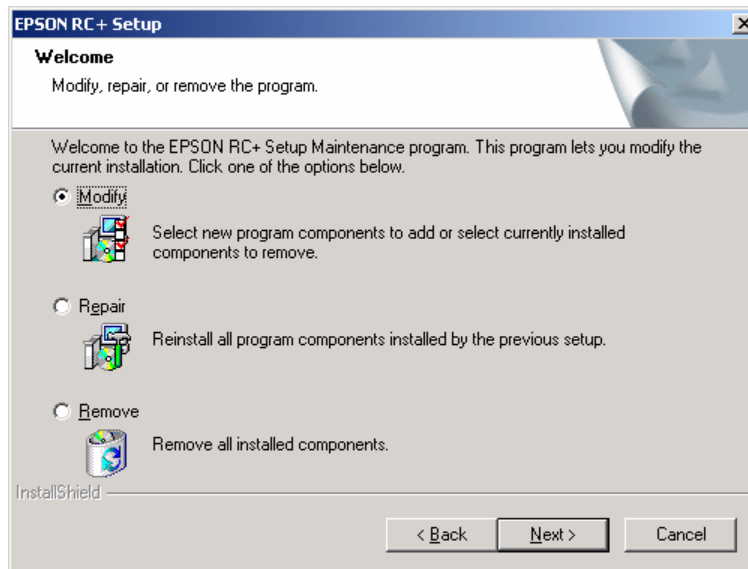
If you must upgrade EPSON RC+ to use the option you are installing, then you must obtain the EPSON RC+ Installation CD from your distributor. Upgrade EPSON RC+ by following the release notes that came with the CD. During installation, be sure to check the option you are installing.

If you already have the correct version of EPSON RC+ for the option you are installing, then follow these steps to install the software for the option:

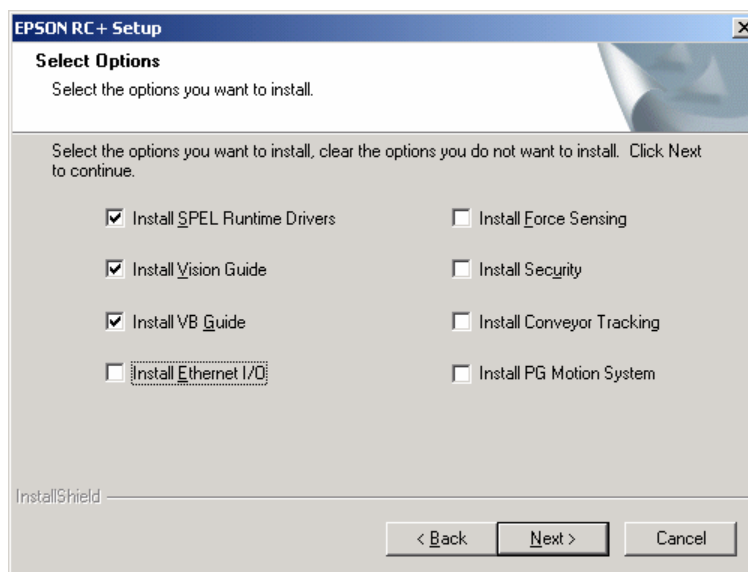
1. You can install the option software by running Add / Remove Programs from the Windows Control Panel or by running the setup program from the EPSON RC+ Installation CD.



2. Click Change/Remove. The following dialog will be displayed.



3. Select **Modify**, then click **Next**.



4. Check the option you are installing.
5. Click Next and follow the remaining instructions to install the option software.
6. For some options, you will be instructed to restart the system.

Manuals

Manuals are provided in PDF format. They are located on the EPSON RC+ CD and are automatically installed on the hard disk during setup. Adobe Acrobat Reader is required to view the PDF files. The reader software is automatically installed during setup and is also located on the EPSON RC+ CD in the \Acrobat_Reader directory.

For each option described in this document, the corresponding manual is listed. Refer to the manual for further instructions after installing the option.

Vision Guide Option

EPSON RC+ Software Version

This option requires EPSON RC+ v3.4.1 or later.

Other Options Required

SPEL Runtime Drivers and / or VB Guide

Hardware

To use live video and acquire images, the Vision Guide frame grabber board must be installed in the controller. Refer to the chapter *Installation* in the Vision Guide manual to install the frame grabber board.

Software

Refer to the section *Installing the Software for the New Option* in this document and add the Vision Guide option. During software installation, you will be asked to select the frame grabber type.

Manual

Vision Guide User's Manual
Vision Guide Properties and Results Reference.

Code Reading Option

Other Options Required

Vision Guide

EPSON RC+ Software Version

This option requires EPSON RC+ v3.4.1 or later.

Hardware

There is no additional hardware required for this option.

Software

There is no additional software required for this option. After the software options key has been enabled for this option, the Vision Guide Coder Reader and OCR tools will be enabled.

Manual

Vision Guide User's Manual
Vision Guide Properties and Results Reference.

VB Guide Option

EPSON RC+ Software Version

This option requires EPSON RC+ v3.4.1 or later.

Other Options Required

SPEL Runtime Drivers

Hardware

There is no additional hardware required for this option.

Software

Refer to the section *Installing the Software for the New Option* in this document and add the VB Guide option. Then install one of the following on your controller: Visual Basic 6.0, Visual C++ 6.0, or Visual Studio .NET.

Manual

VB Guide User's Manual

Ethernet I/O Option

EPSON RC+ Software Version

This option requires EPSON RC+ v3.4.1 or later.

Other Options Required

SPEL Runtime Drivers

Hardware

The Opto22 Ethernet I/O hardware is provided by the customer. No additional hardware is required for the controller.

Software

Refer to the section *Installing the Software for the New Option* in this document and add the Ethernet I/O option.

Manual

EPSON RC+ User's Guide, section *Ethernet I/O* in the chapter *I/O Systems*.

PG Motion System Option

EPSON RC+ Software Version

This option requires EPSON RC+ v3.6.1 or later.

Other Options Required

SPEL Runtime Drivers

Hardware

The PG Motion System requires one or more PG (Pulse Generator) boards to be installed in the controller. Refer to the PG Motion System manual to install the PG board(s).

Software

Refer to the section *Installing the Software for the New Option* in this document and add the PG Motion System option.

Manual

PG Motion System Manual

Security Option

EPSON RC+ Software Version

This option requires EPSON RC+ v3.4.1 or later.

Other Options Required

None

Hardware

There is no additional hardware required for this option.

Software

Refer to the section *Installing the Software for the New Option* in this document and add the Security option.

Manual

EPSON RC+ User's Guide, chapter *Security*

Conveyor Tracking Option

EPSON RC+ Software Version

This option requires EPSON RC+ v3.6.2 or later.

Other Options Required

SPEL Runtime Drivers

Hardware

The Conveyor Tracking Option requires one or more PG (Pulse Generator) boards to be installed in the controller. Refer to the EPSON RC+ User's Guide, chapter *Conveyor Tracking* to install the PG board(s).

Software

Refer to the section *Installing the Software for the New Option* in this document and add the Conveyor Tracking option.

Manual

EPSON RC+ User's Guide, chapter *Conveyor Tracking*

OP500RC Operator Pendant Option

EPSON RC+ Software Version

This option requires EPSON RC+ v3.6.0 or later.

Other Options Required

SPEL Runtime Drivers

Hardware

The OP500RC Operator Pendant. Refer to the OP500RC Manual for installation instructions.

Software

No additional software is required for this option. You do not need to enable the software options key for this option.

Manual

OP500RC Manual

Force Sensing Option

EPSON RC+ Software Version

This option requires EPSON RC+ v3.4.1 or later.

Other Options Required

SPEL Runtime Drivers

Hardware

The Force Sensing Option requires one or more ATI ISA force sensor boards to be installed in the controller. Refer to the EPSON RC+ User's Guide, chapter *Force Sensing* to install the force sensor board(s).

Software

Refer to the section *Installing the Software for the New Option* in this document and add the Force Sensing option.

Manual

EPSON RC+ User's Guide, chapter *Force Sensing*

Expansion ISA Digital I/O Option

EPSON RC+ Software Version

This option requires EPSON RC+ v3.4.1 or later.

Other Options Required

SPEL Runtime Drivers

Hardware

The Expansion I/O Option requires that you install additional EPSON Standard Digital I/O boards. Refer to the controller manual for installation instructions.

Software

No additional software is required for this option. You do not need to enable the software options key for this option.

Manual

EPSON RC+ User's Guide, chapter *ISA Digital I/O Boards*
RC420 or RC520 Controller Manual

SPEL Runtime Drivers Option

EPSON RC+ Software Version

This option requires EPSON RC+ v3.4.1 or later.

Other Options Required

None

Hardware

The SPEL Runtime Drivers option is installed on most systems since it is required to run SPEL+ programs and for the motion systems to operate. If you are adding this option to a system that did not ship with it, then you must install one or more MIB boards. Refer to the controller manual for installation instructions.

Software

Refer to the section *Installing the Software for the New Option* in this document and add the SPEL Runtime Drivers option.

Manual

EPSON RC+ User's Guide
RC420 or RC520 Controller Manual

Standalone Option

EPSON RC+ Software Version

This option requires EPSON RC+ v3.5.0 or later.

Other Options Required

SPEL Runtime Drivers

Hardware

The Standalone MIB board must be installed in the controller. All standard MIB boards must be removed. This board allows you to run SPEL+ programs and connect an Emergency Stop and Safeguard without any drive units connected. Refer to the controller manual for installation instructions.

Software

No additional software is required for this option. You do not need to enable the software options key for this option.

Manual

EPSON RC+ User's Guide
RC420 or RC520 Controller Manual