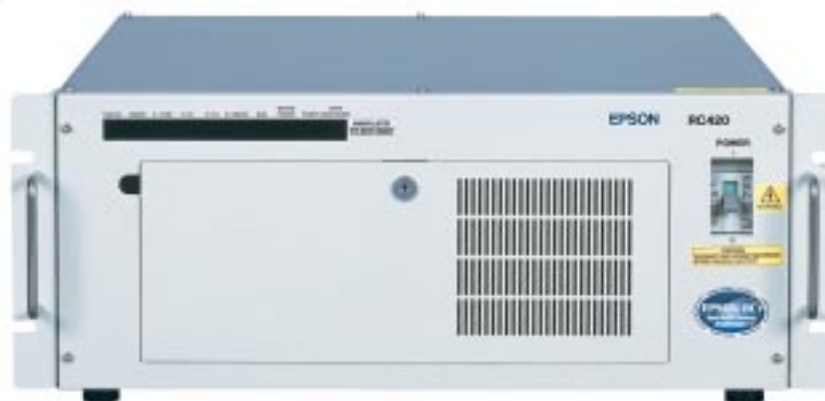


Industry Leading Open Architecture Controllers

- Easy to learn and use
- Powerful SPEL+ language provides commands for robot workcell control
- Extensive Integrated help screens
- Built-in source level debugger
- Project management mechanism
- Open architecture design allows use of 3rd party hardware and software
- Active X controls option allows programming via Visual Basic or Visual C++
- User created DLL's can be added to SPEL+ Language
- Uses standard software (Microsoft Windows 2000™) and hardware (Intel Pentium® III CPU)
- Multiple 4-Axis Robots can be controlled from 1 Controller (RC520)
- Runs up to 32 simultaneous tasks
- I/O monitor shows entire system I/O state in real time
- Supports a variety of I/O options
- Provides Integrated options such as: Vision, Force Sensing, Conveyor Tracking, Security/Audit Log, Ethernet I/O, and Active X Controls

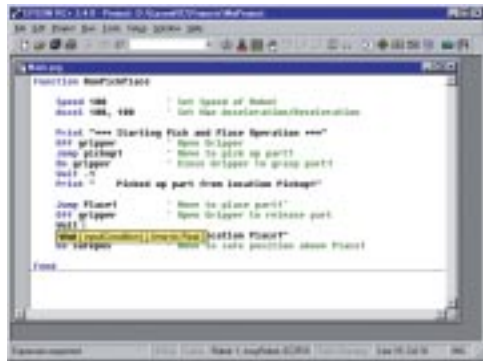


Jog & Teach Dialog

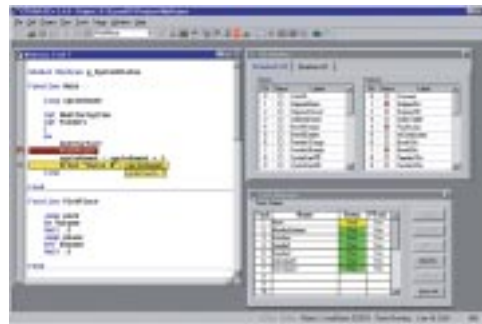


**RC420
Compact Controller**





EPSON RC+ Editor



**Debugger, I/O Monitor,
Task Manager**



Vision Guide

Powerful, Yet Easy to Use

EPSON is an industry leader in the area of open architecture PC based controls for industrial robots. Not only is our EPSON RC+ control software easy to learn and use. It is also extremely powerful. Our EPSON RC+ Development Environment provides all the elements you would expect to find in an advanced control system. Standard features such as 32 task multitasking, integrated source level multitask debugger, color syntax checking editor, control of multiple robots from one controller, variable data types, and language extensibility through user DLL's (to name a few) help make EPSON RC+ the control system software of choice for even the most advanced users. But at the same time EPSON RC+ is ideal for beginning users as well because it is easy to learn and intuitive to use.

RC520 Expansion Controller

Our powerful EPSON RC+ software is available via 2 hardware platforms. The first hardware platform is called the RC520 controller. It consists of an industrial 19 inch rack mount industrial PC with a single board computer using a fast Intel Pentium® III processor and running Microsoft Windows 2000™ along with a separate intelligent drive unit. The RC520 has excellent expansion capabilities for options such as Vision Guide, additional I/O, force sensing, etc. It is also capable of running up to 3 EPSON Robots. The RC520 is the controller of choice for those applications that require lots of power in terms of expansion capability.

RC420 Compact Controller

The RC420 is the second hardware platform available for our popular EPSON RC+ software. The RC420 controller is a compact single box version of the RC520 for when space is at a premium. The RC420 compact controller makes excellent use of standard PC hardware architecture (a fast Intel Celeron® processor and Microsoft Windows 2000™) while at the same time fitting into a compact space. It also has all the same controls capabilities as the RC520. The primary difference between the RC520 Expansion Controller and the RC420 Compact Controller is that the RC420 has less available slots for option boards and is dedicated to running just 1 EPSON Robot per RC420 controller.